

# Long-Term Effects of Phacoemulsification on Intraocular Pressure in Patients with Primary Open-Angle Glaucoma and Pseudoexfoliation Glaucoma

*Paper ID: 75216*

Dr. Lorena Wheelock-Gutierrez

Co-authors:

Carolina Prado-Larrea, MD; Jose A Oyervides-Alvarado, MD;  
Gabriel Lazcano, MD; Roberto Gonzalez-Salinas, MD;  
Jesus Jimenez-Roman, MD.



Asociación para Evitar  
la Ceguera en México I.A.P.  
HOSPITAL "DR. LUIS SÁNCHEZ BULNES"

*No conflict of interest to declare*

# Purpose

## Primary:

- To compare long-term effects of phacoemulsification on intraocular pressure (IOP) in patients with primary open-angle glaucoma (POAG) and pseudoexfoliation glaucoma (PXG).

## Secondary:

- To compare the change in the number of topical hypotensive drugs used and visual fields values (mean deviation and visual field index).

# Methods

- Longitudinal, retrospective, observational and descriptive study
- Asoc. Para Evitar la Ceguera (Mexico City), January 2018 – January 2019

## Demographics characteristics

- Baseline
- Postoperative day 1, week 1, month 1, 3, 6, and 12

## Visual fields data

- Baseline
- Postoperative months 3, 6, and 12.

## Exclusion criteria

- BCVA <20/400
- Any other corneal or retinal disease

# Methods

- Success:

- IOP ↓ 15% compared with preop

- Complete

- Qualified

- Failure:

- IOP >21 mmHg at 2 consecutive visits

- IOP ↓ <15% compared with preop

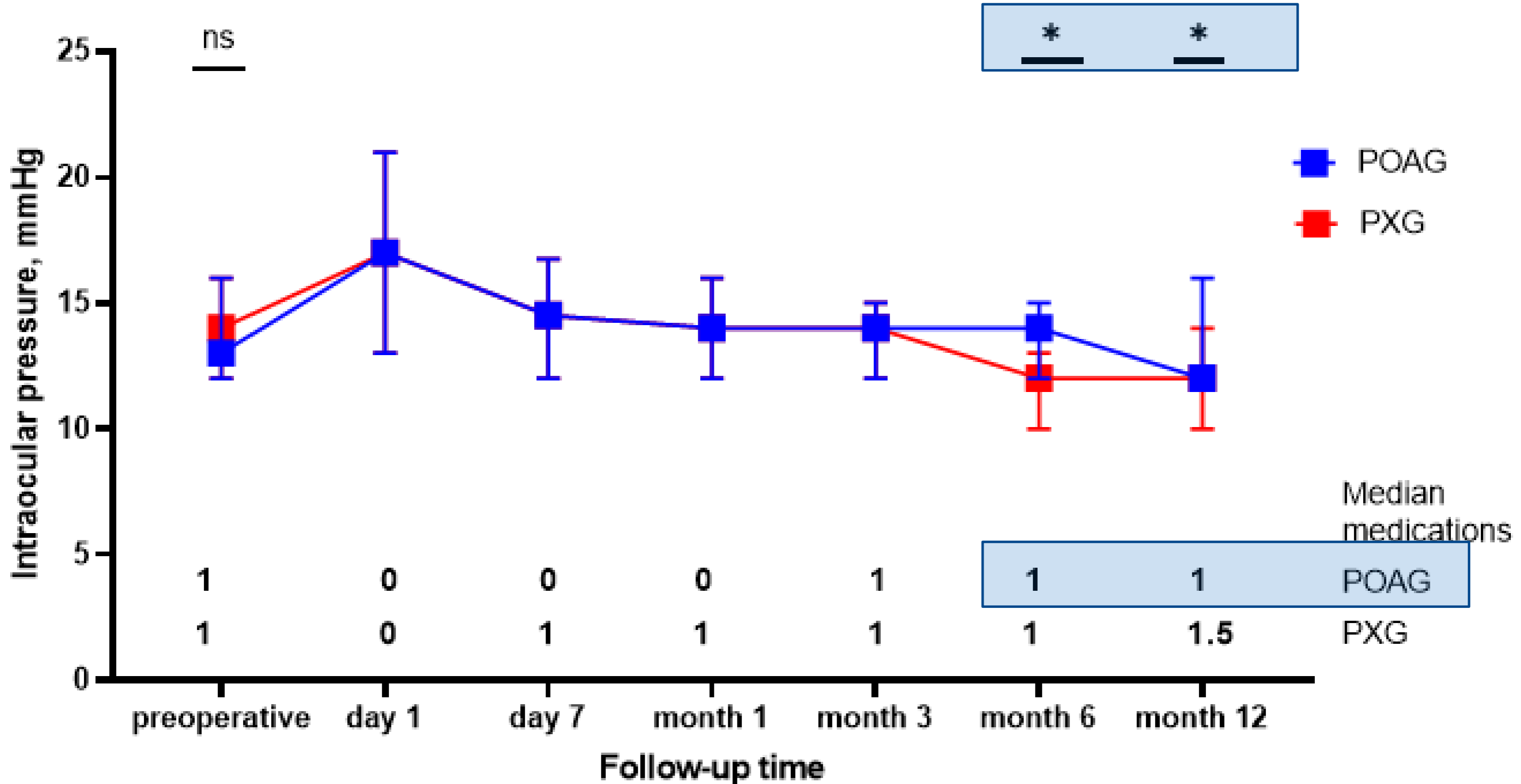
# Results

- A total of 674 surgical procedures
- 102 eyes met criteria

Table 1. Demographic and baseline clinical characteristics (n = 102 eyes)

Parameter	POAG n=51	PXG n=51	#p
Age (years), Mean $\pm$ SD (range)	72.92 $\pm$ 8.2(52-89)	78.82 $\pm$ 7.3 (63-98)	<b>0.0002*</b>
Gender, n (%)			
Female/Male	35(69)/16(31)	27(53)/24(47)	0.105
Eye, n (%)			
Right/Left	23(45)/28(55)	29(56.9)/22(43.1)	0.235
VA, median [IQR] (mean $\pm$ SD)			
UCVA (LogMAR)	0.7[0.5,1.2](0.9 $\pm$ 0.5)	0.85[0.6,1.8](1.2 $\pm$ 0.8)	0.058
CDVA (LogMAR)	0.4[0.2,0.5](0.4 $\pm$ 0.3)	0.5[0.3,1](0.8 $\pm$ 0.8)	<b>0.016*</b>
IOP, median [IQR] (mean $\pm$ SD)			
Baseline IOP (mmHg)	16.5[16,18.5](17.5 $\pm$ 3.8)	20[16,24](20.8 $\pm$ 5.6)	<b>0.003*</b>
Preoperative IOP (mmHg)	13[12,16](13.5 $\pm$ 2.5)	14[12,16](14.5 $\pm$ 3.3)	0.149
Meds, median[IQR](mean $\pm$ SD)	1 [1,2](1.6 $\pm$ 1.1)	1 [1,2](1.3 $\pm$ 1.1)	0.217
VF, median [IQR] (mean $\pm$ SD)			
MD (dB)	-4.99[-7.5,-3.4](-6.2 $\pm$ 4.8)	-8.9[-19.2,-3.5](-11.6 $\pm$ 9.9)	<b>0.036*</b>
VFI (%)	92[83,96](86.8 $\pm$ 14.3)	78[46,96](66.7 $\pm$ 34.9)	<b>0.026*</b>

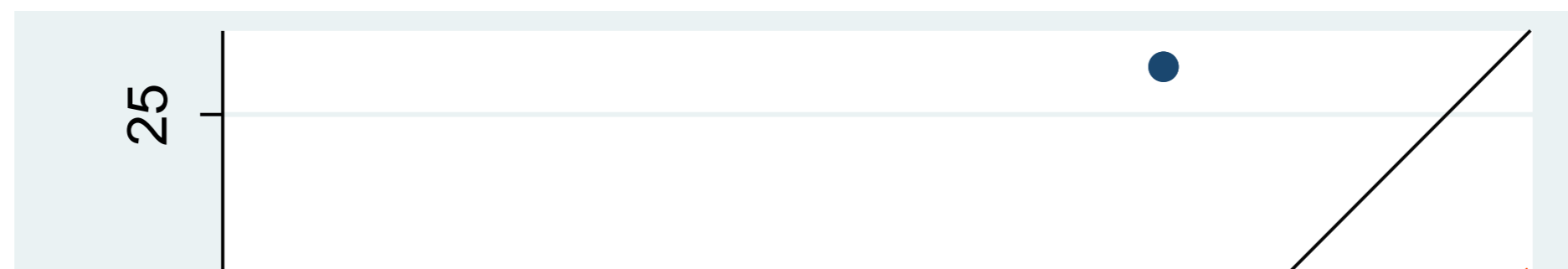
# Results



Pat  
 Me  
 (m  
 CE  
 IO  
 Me

#  
 1\*  
 1\*  
 84

# Results

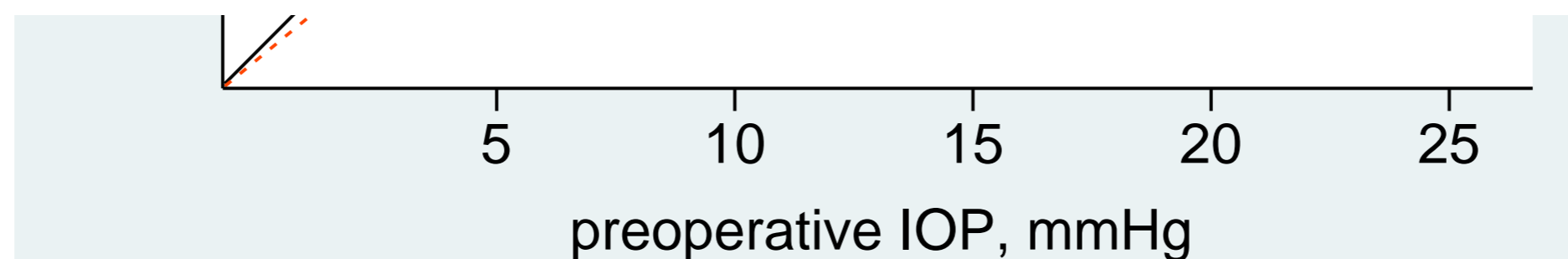


**Table 3. Post-operative measurements at month 12 of follow-up**

	POAG (n=35)	PXG (n=39)	#p
<b>Complete success, n (%)</b>	2 (5.7)	5 (12.8)	0.262
<b>Qualified success, n (%)</b>	12 (34.3)	20 (51.3)	0.141

Abbreviation: POAG: primary open-angle glaucoma, PXG: pseudoexfoliation glaucoma.

#Chi2 test, Fisher's exact test

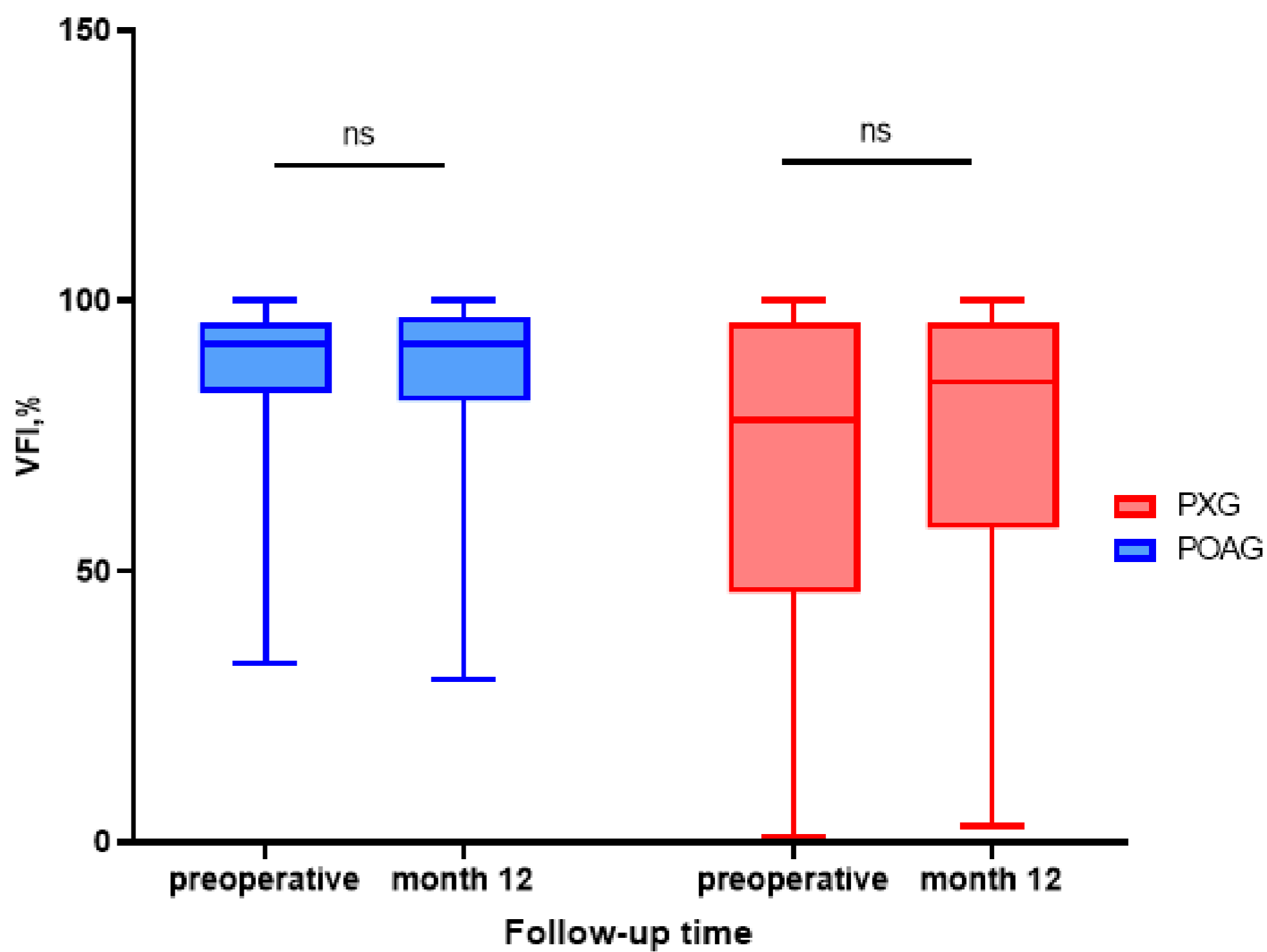
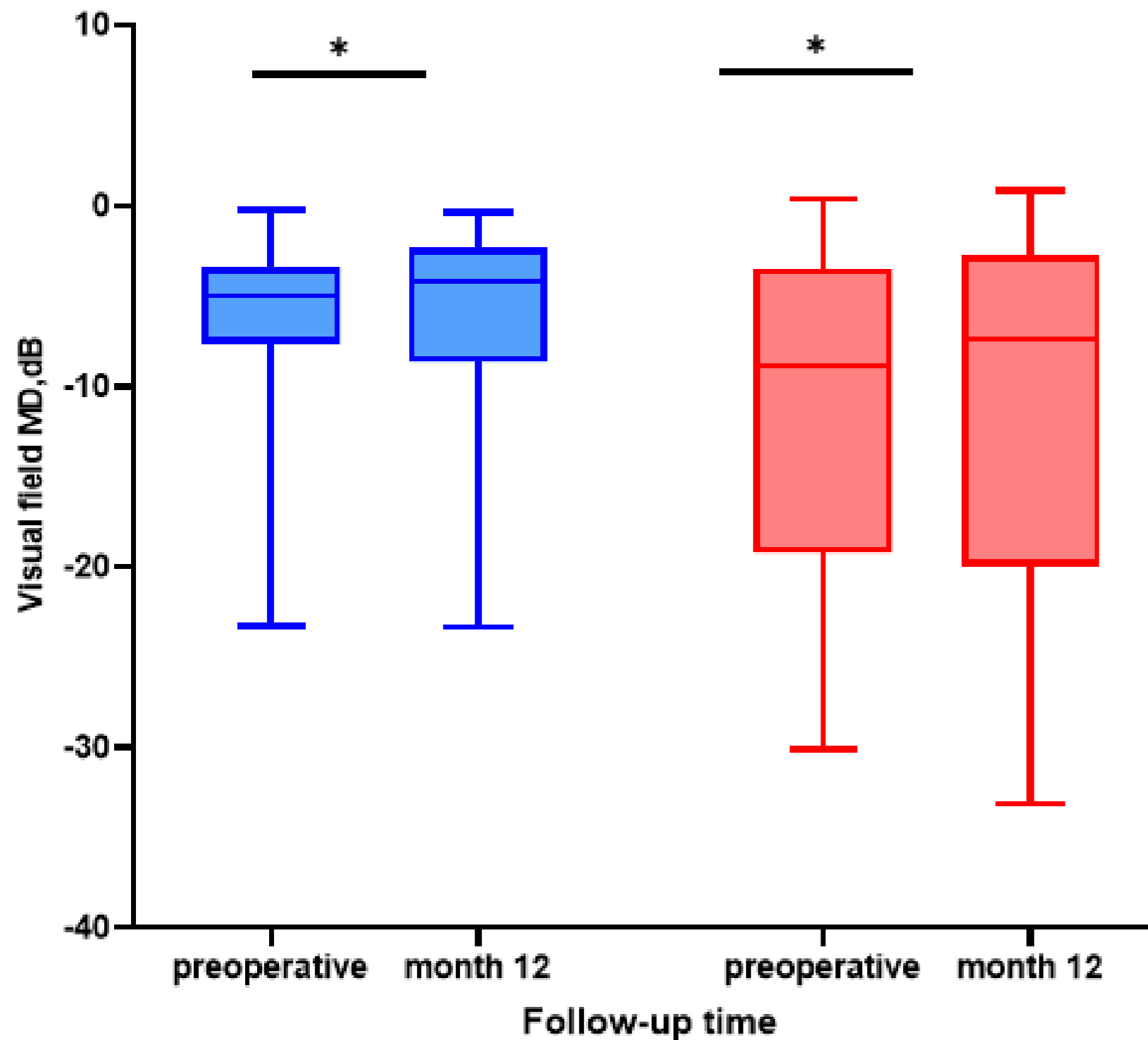




# Results

## Mean deviation (MD)

## Visual field index (VFI)



# Conclusions

- Hispanic population exhibit an IOP behavior similar to what is reported in other ethnic groups.
- PXG group have a significant amount of IOP reduction probably associated with a higher presurgical IOP ( $p=0.001$ ).
- POAG group have a statistically significant reduction in the number of glaucoma medications ( $p=0.026$ )
- Limitations: retrospective nature, non-standardized groups, multiple surgeons.
- More prospective studies on Hispanic population would guide us as to whether this is a good initial measure for certain patients.